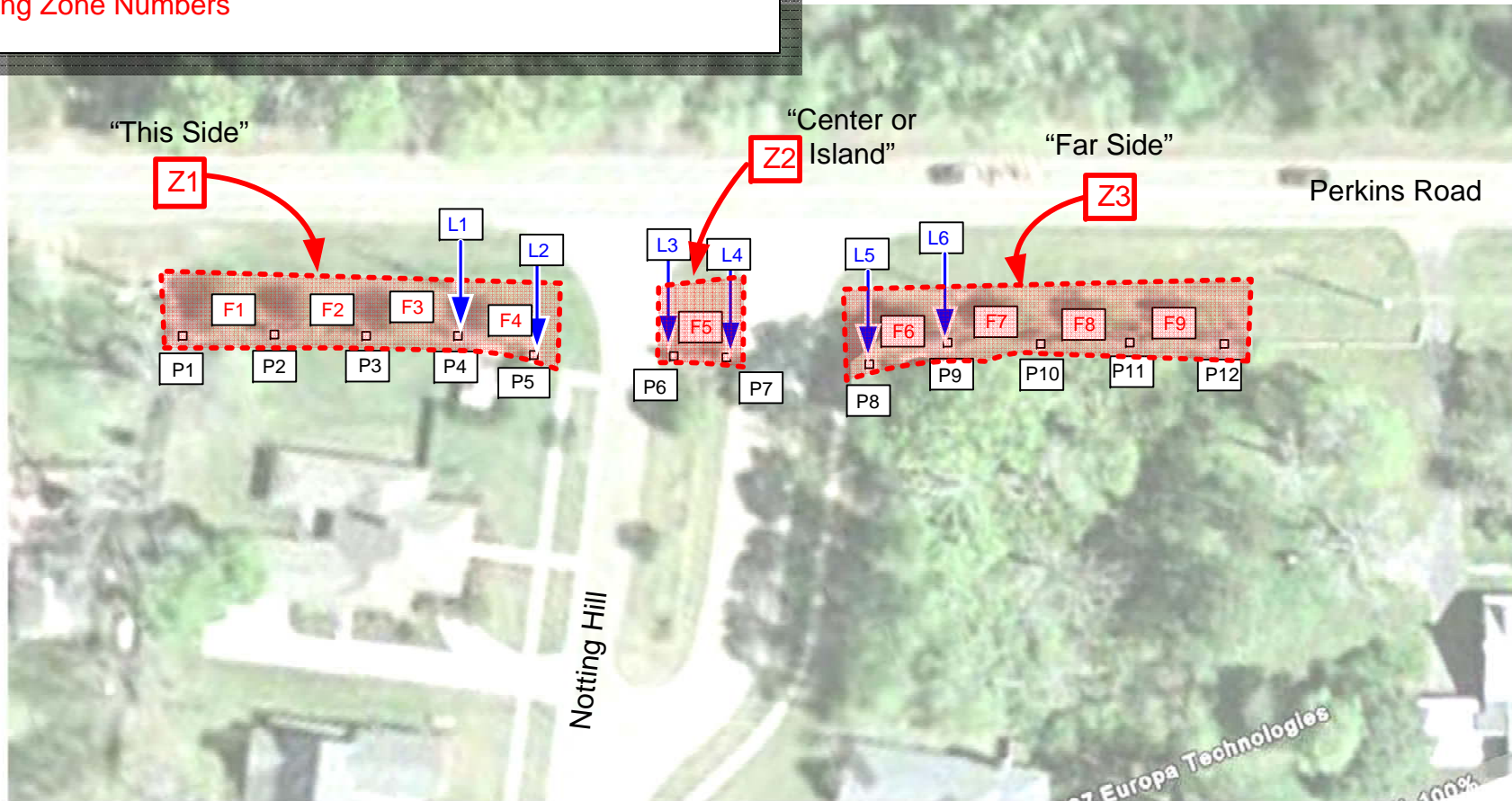


Legend

- F = Flood Lights on Ground in front of Fence ... 100W Bulbs
- L = Light Numbers on Posts of Fence70W Bulbs
- P = Post Numbers of Fence
- Z = Lighting Zone Numbers

Notting Hill Entrance Lighting Zones



Zones:

- Z1 = F1, F2, F3, F4, L1, & L2 "This Side"
- Z2 = F5, L3, & L4 "Island or Center"
- Z3 = F6, F7, F8, F9, L5, & L6 "Far Side"

15 Lights total

Parts:

- 100 W Bulbs: MHC100/U/M/4K (Metal Halide)
- 70 W Bulbs: MHC70/U/M/4K (Metal Halide)
- Light Photocell: Fisher Peirce OLC, Sun Tech, FP7760-SS, 1000W, 1800VA
- Flood Light Fixture: AFL11/100PMH120/DB-P/HDS
Manuf: Kim Lighting

J. J. Bishara
3/8/2008